



CIVIL AVIATION SERVICES

# INFRASTRUCTURE CONSTRUCTION

THE TOUGHEST JOBS CALL FOR THE TOUGHEST AIRCRAFT

**ERICKSON**  **N**



**WE ARE ERICKSON. TESTED AND TRUSTED®.**



## POWERLINE

### World leader in aerial heavy-lift operations — saving time and money for transmission line and infrastructure projects

The lift capacity, the aft-facing pilot seat, and our anti-rotation device — coupled with the skills of our pilots and experience in the energy industry — make Erickson the world leader in aerial heavy-lift operations for transmission line and infrastructure projects.

Our legacy, S-64 Air Crane® aircraft has a lift capacity of up to 25,000 pounds (11,340 kilograms) and a unique aft-facing pilot station that allows us to develop a transmission line and infrastructure construction system that is cost-competitive compared to conventional methods.

## INFRASTRUCTURE CONSTRUCTION

### Building communities with precision lift, focusing on HVAC, oil & gas, and specialty projects

#### PRECISION LIFT

Uniquely qualified for precision lift services and heavy-lift jobs in challenging locations with limited transportation options. For infrastructure development such as bridges, roads, dams, industrial facilities, HVAC, pipeline, or waterline projects — we configure to meet your needs with minimal environmental impact.

#### OIL & GAS

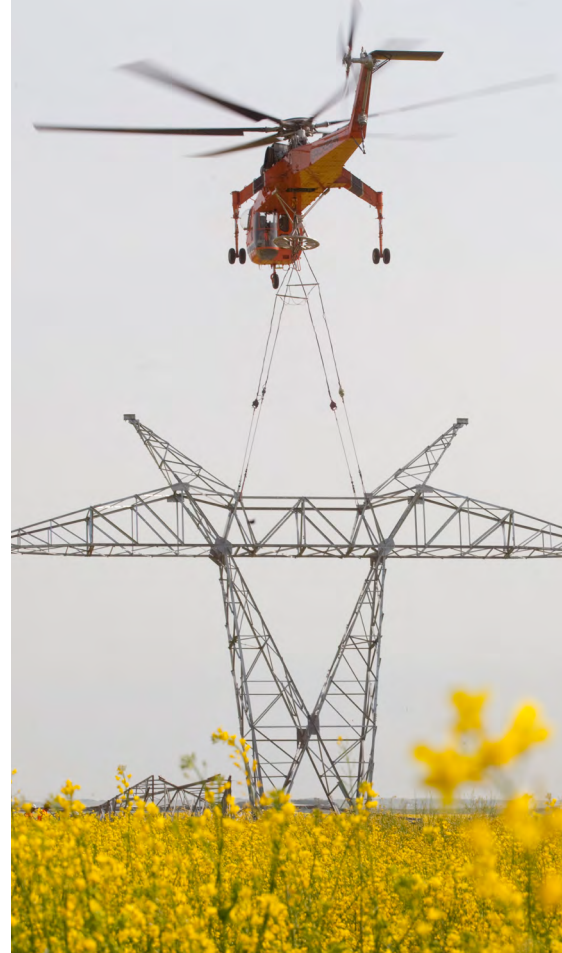
Erickson has an insider's knowledge of the tools and logistics of energy extraction. Our objective is maximum uptime availability and customer satisfaction, and we provide passenger and cargo transport, along with SAR and MEDEVAC services, onshore and offshore. We are committed to performing operations in an eco-friendly nature and reducing or eliminating negative impacts on the environment. Our oil and gas operations are designed to meet the challenges of making resource exploration and production compatible with conservation and sustainability.

#### HVAC

The S-64 Air Crane® aircraft is uniquely designed to aid in the delivery and installation of heavy-weight ventilation and air conditioning units. Erickson crew have safely delivered HVAC onto hard-to-reach rooftops and atop towering city high rises. Placing more than 40,000 HVAC units onto skyscrapers, automobile plants, and hangars across North America and Europe.

#### SPECIALITY PROJECTS

Erickson's unique short-term projects include removing and reinstalling the Statue of Freedom atop the United States Capitol Dome, rescuing an endangered rhino from the jungles of Borneo, moving snow to the Vancouver B.C. Olympics, staging the Dream Chaser test flight, and relocating internationally acclaimed racing yachts.



**ERICKSONINC.COM**

**+1 503 505 5800**



5550 S Macadam Avenue, Suite 200  
Portland, OR 97239 USA

©2020 Erickson Incorporated. All Rights Reserved.

**ERICKSON**